

Richardson Perfect Cooking Ranges

HUNDREDS of thousands of these Perfect Ranges have been in use for a number of years, and their reputation is firmly established because whenever improvements have been adopted they have resulted in a decrease in the labor of cooking, as well as the consumption of fuel and expense of repairs.

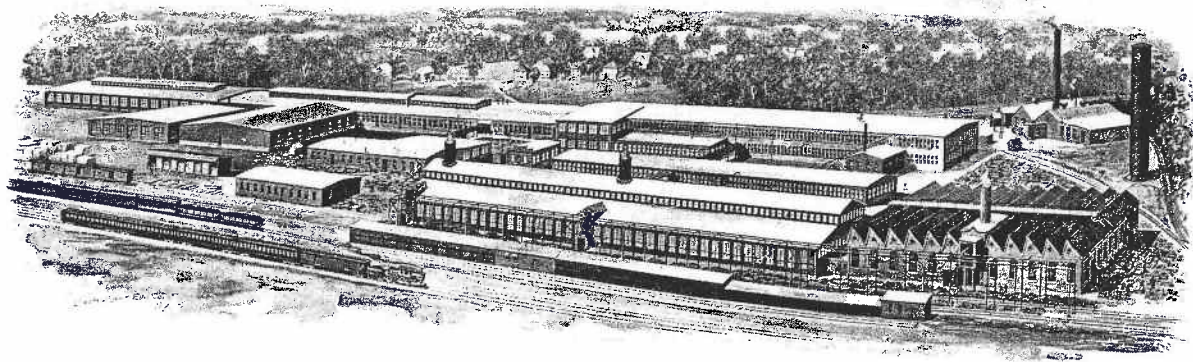
Among the valuable features which contribute to the accomplishment of this desirable result are six which deserve special mention. First, is the Removable Grate, either duplex or flat, for coal or wood, which can be removed without disturbing the Brick, Grate-rest or Water Back. Then there is the large Flue which distributes the heat so effectually around the oven and which makes possible successful results in baking and cooking. The Large Broiling Door, which is very convenient, and the Large Heavy Water Back, which insures an abundance of hot water, are both noteworthy features. Nor should we forget to call your attention to the Extra Large Roomy Oven and a Foot Attachment, which enables the cook to open the oven door when holding a loaded roasting pan in both hands.

Our Perfect triangular revolving ventilating grate bars are the best made, and aid the cook in keeping the fire clean and bright.

Although the appearance is very attractive, this result has not been attained at the expense of strength and durability, which are so essential in a high grade range.



Ash Chute
Can be furnished with the Perfect Ranges. Ashes dropped directly into receptacle in cellar, avoiding dirt and dust



Our works, as shown above, are so situated as to benefit by two trunk lines, which insures customers prompt shipments. A large stock is also carried in our warehouse for immediate delivery

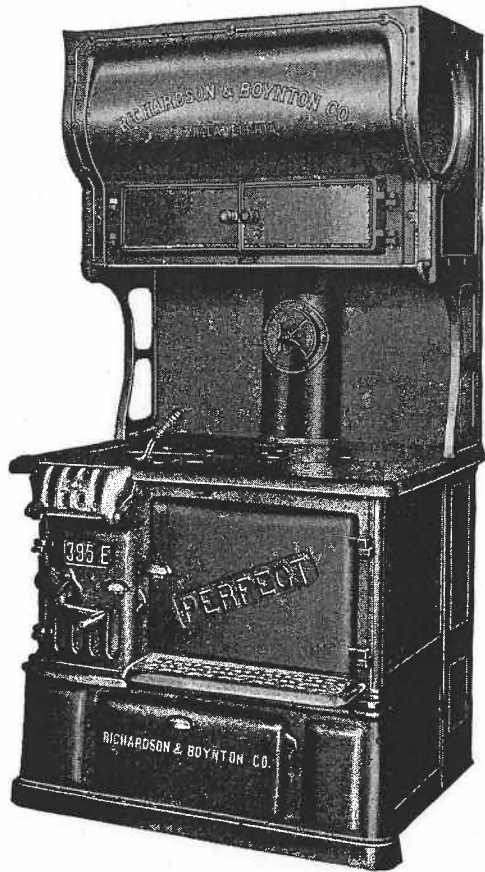
(Works at Newark NJ)

(As of 1919. 395E not yet in production)



No. 395E
Richardson Perfect Range
With Skeleton Base and Plate Shelf

All dimensions page 26



No. 395E

Richardson Perfect Range

With Boiler Closet and Upper Hot Closet

Boiler Closet for 10- or 12-inch Boiler is 32 Inches Long

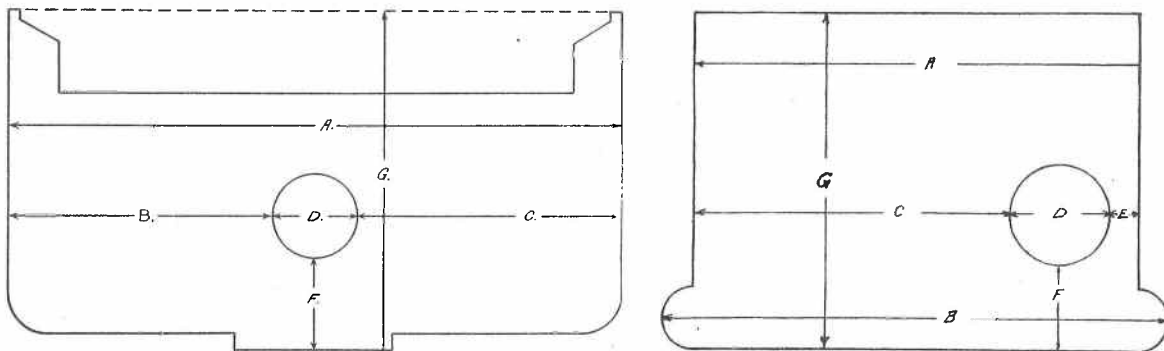
Overall Height is 64 $\frac{3}{4}$ Inches

All other dimensions page 26

Dimensions of Perfect Ranges

Pages 19 to 25

	No. 278	No. 658E	No. 448E	No. <u>395E</u>	No. 378	No. 379
	Inches	Inches	Inches	Inches	Inches	Inches
Size of top, less end shelf	39½x30	39x27	36x25	33¼x23¼	41¼x29	41¼x29
Size of top, with end shelf	46½x30	46x27	43x25	—	48¾x29	48¾x29
Height of range	30	30	28½	28¾	30	30
Height with plate shelf	46½	46½	45	45¼	47	47
Height with hot closet	58	58	56½	56¾	57	57
Size of oven	20x20	18x18	16½x17	16x17	20x20	20x20
Smoke pipe	6	6	6	6	7	7
Brick set, jamb opening	—	33x12	33x12	30x12	—	—
Fire box dimensions	17¼x8½	15½x8½	13½x7	13½x7	11½x11½	11½x11½



Detail for Locating Ash Chute in Range Bottom

	Ash Chute Measurements					Ash Chute Measurements			
	No. 111E	No. 112E	No. 114E	No. 428	No. 528	No. 447-448 495-498	No. 458-558 658-758	No. 278-279	No. 188
A	Inches 49½	Inches 54½	Inches 62½	Inches 49½	Inches 53½	Inches 30	Inches 33¼	Inches 34½	Inches 35½
B	21¼	23¾	27¾	20¼	22½	33¾	36½	37	35½
C	21¼	23¾	27¾	22	23¾	20¾	23½	24⅝	24½
D	7	7	7	7¼	7¼	7¼	7¼	7¼	7¼
E	7	7	7	7¼	7¼	2	2½	2⅝	4
F	9	9	9¼	5½	5½	6¼	6½	6	5¾
G	29	31	31	25¾	25¾	23½	25¾	28	25

Sketch above shows right-hand Range Measurements. Left-hand Range Measurements are the same with ends reversed

(Apparently no ash chute option on 395E)