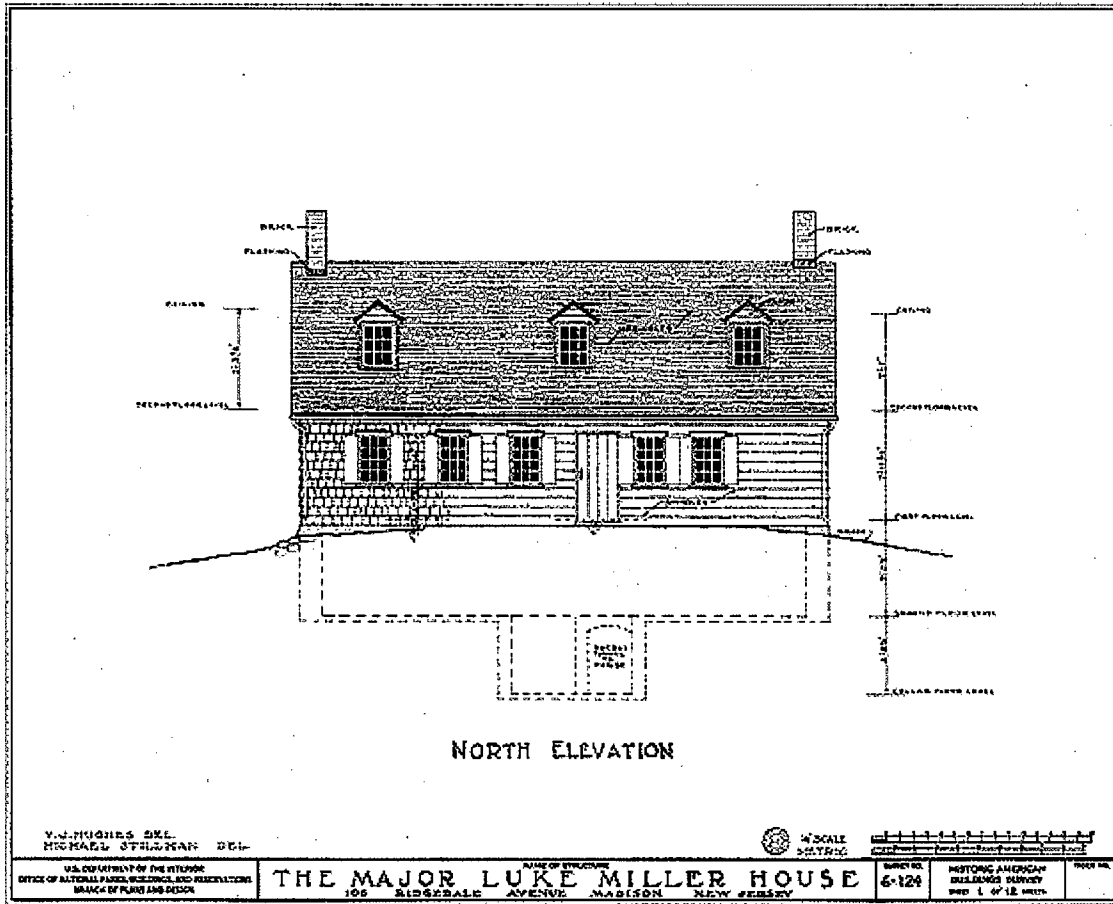
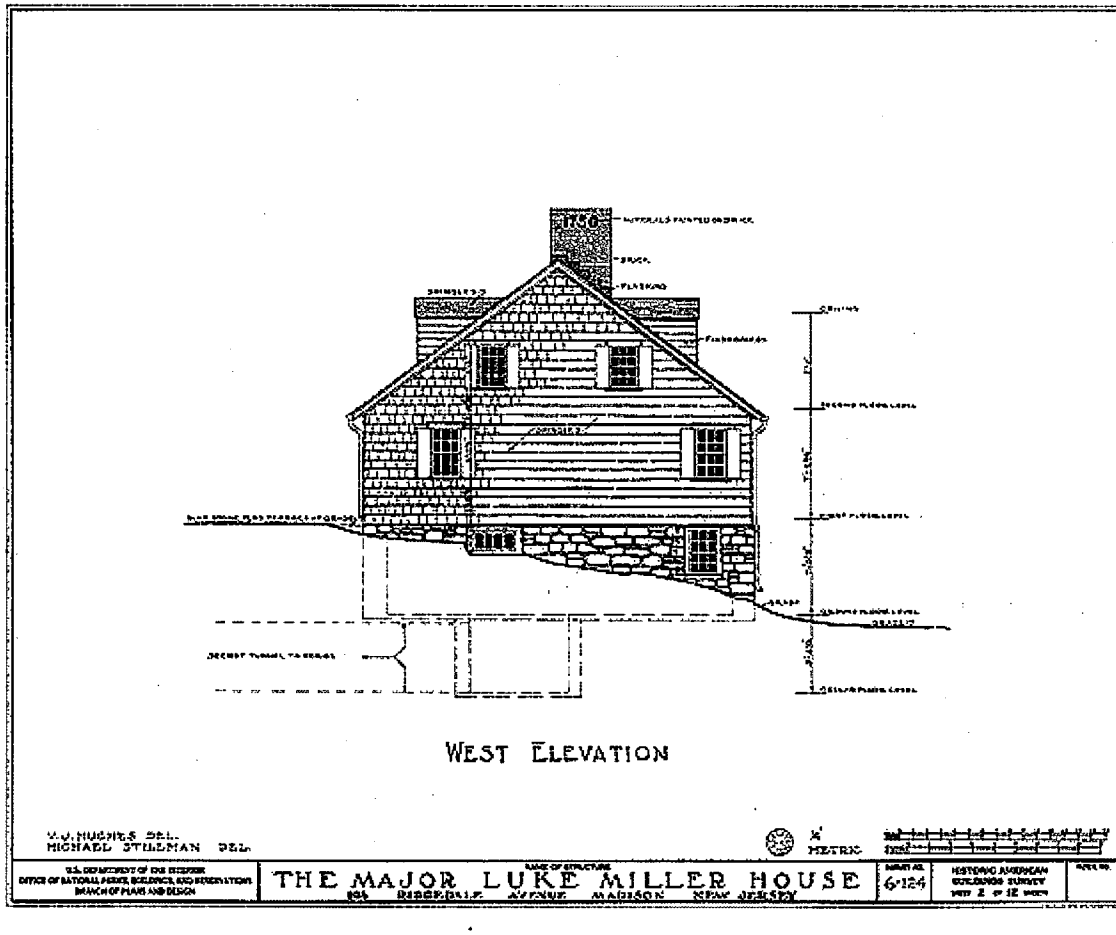


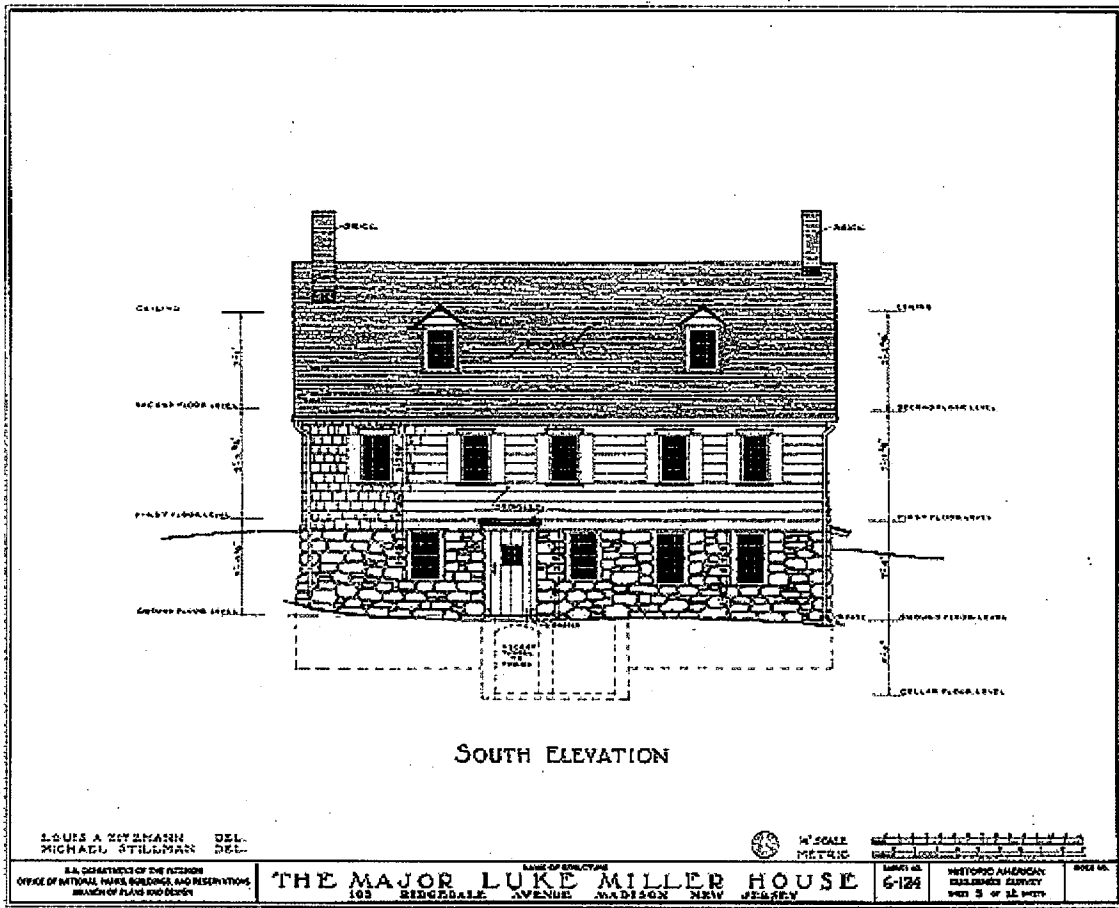
Larger reference image (TIFF - 58K bytes)
Highest resolution image (TIFF - 195K bytes)



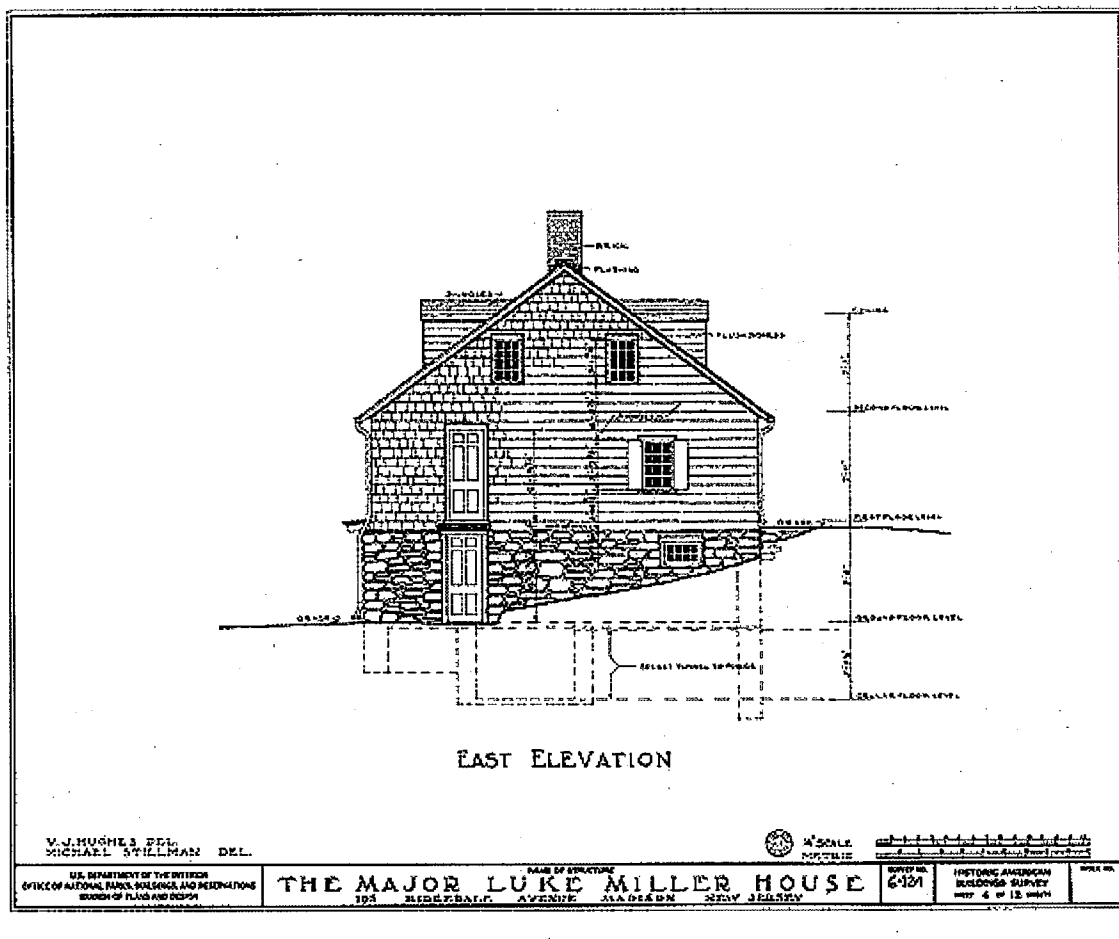
Larger reference image (TIFF - 149K bytes)
Highest resolution image (TIFF - 586K bytes)



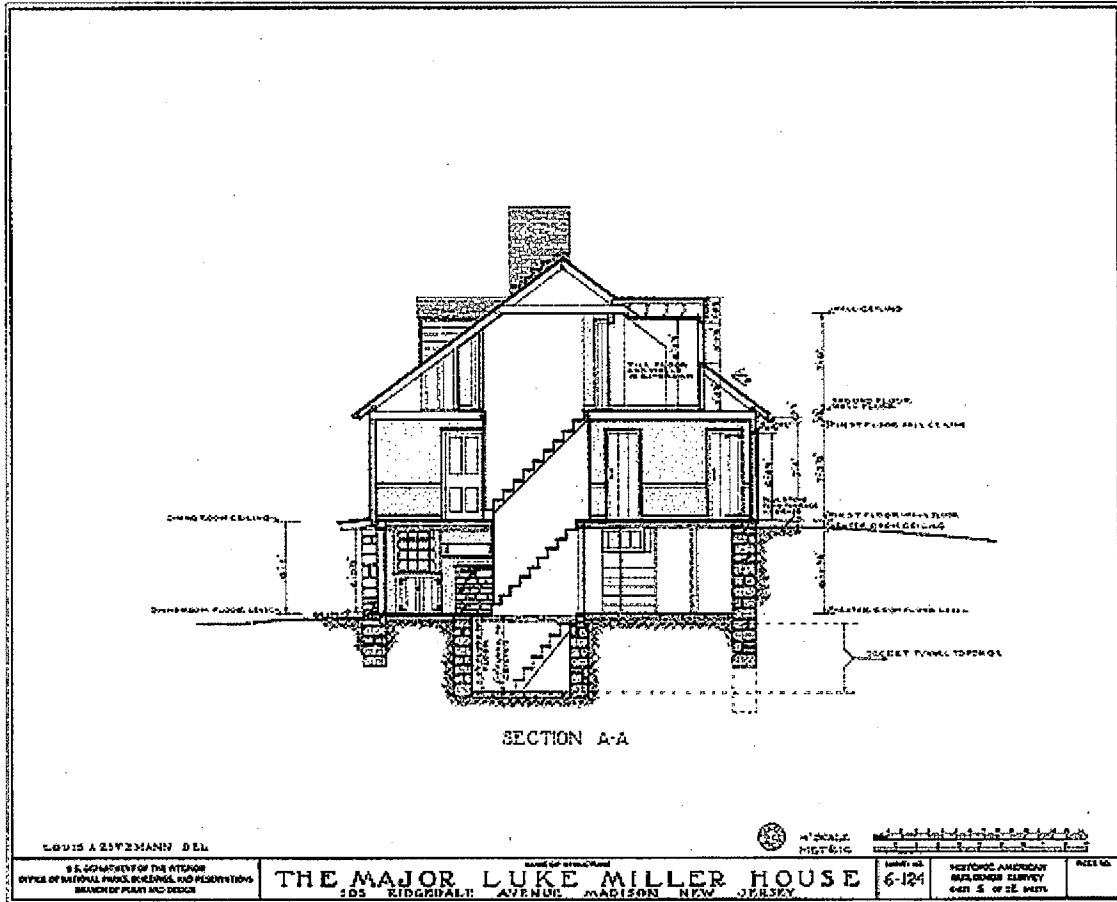
Larger reference image (TIFF - 113K bytes)
Highest resolution image (TIFF - 435K bytes)



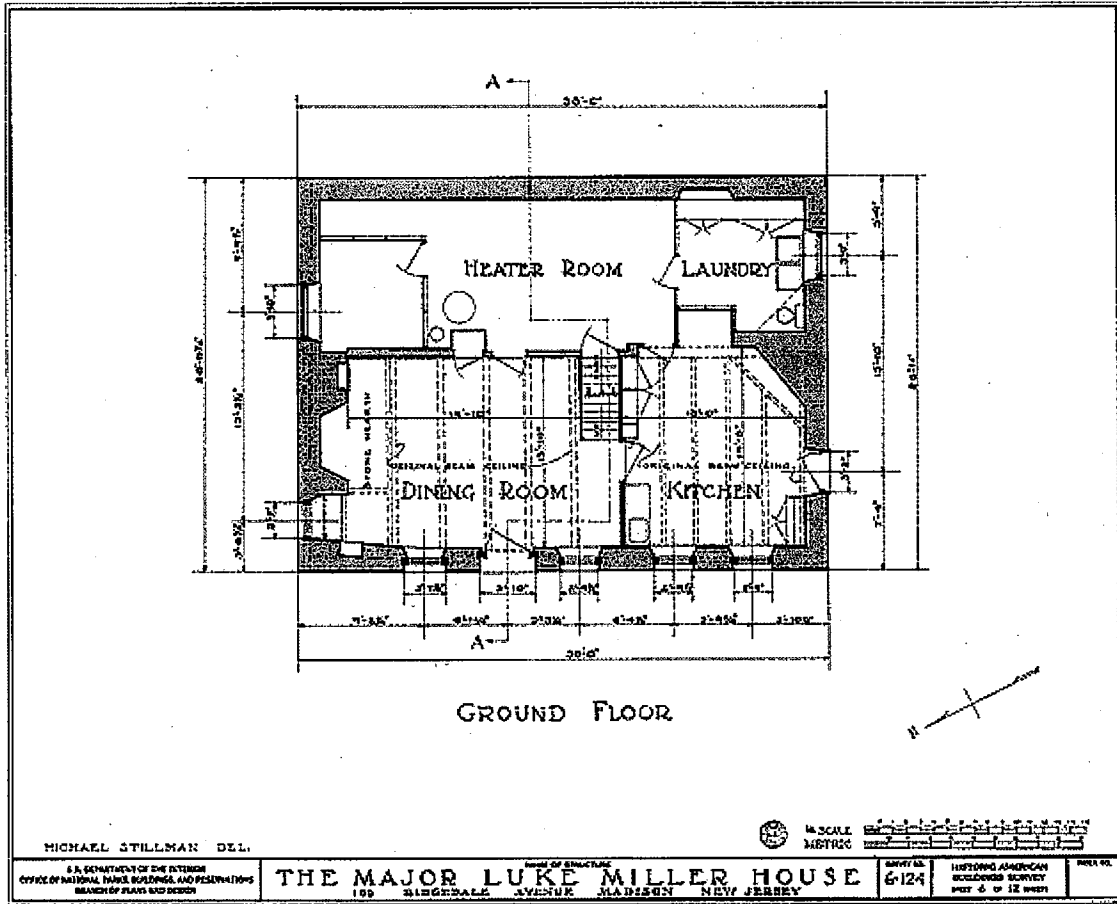
Larger reference image (TIFF - 154K bytes)
Highest resolution image (TIFF - 598K bytes)



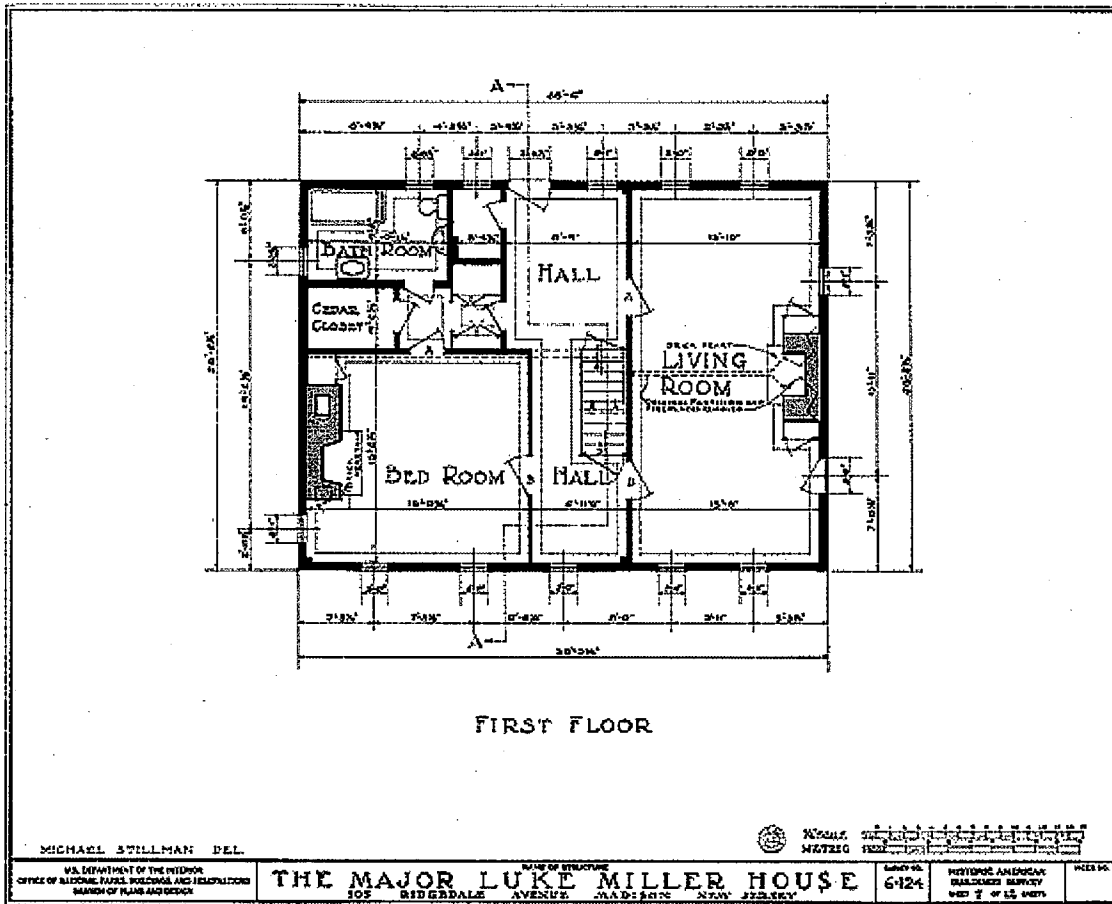
Larger reference image (TIFF - 109K bytes)
Highest resolution image (TIFF - 411K bytes)



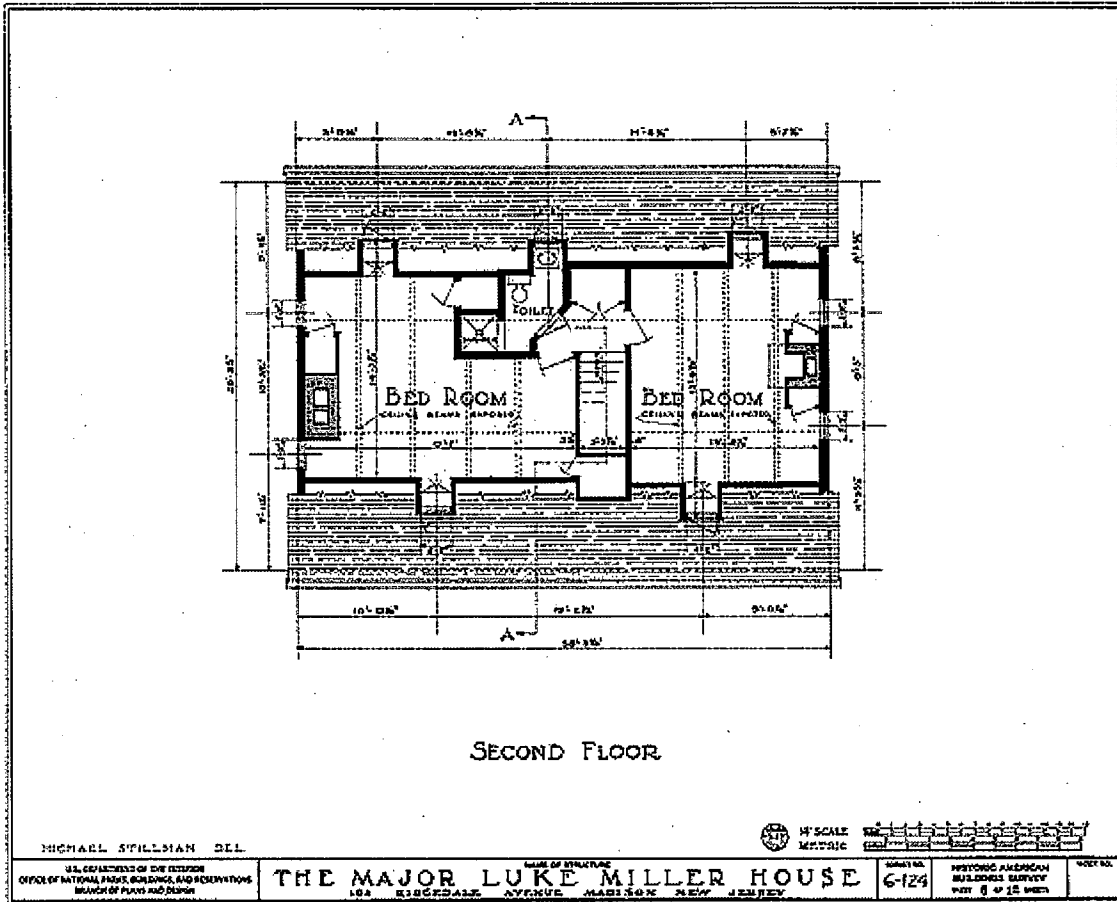
Larger reference image (TIFF - 117K bytes)
Highest resolution image (TIFF - 399K bytes)



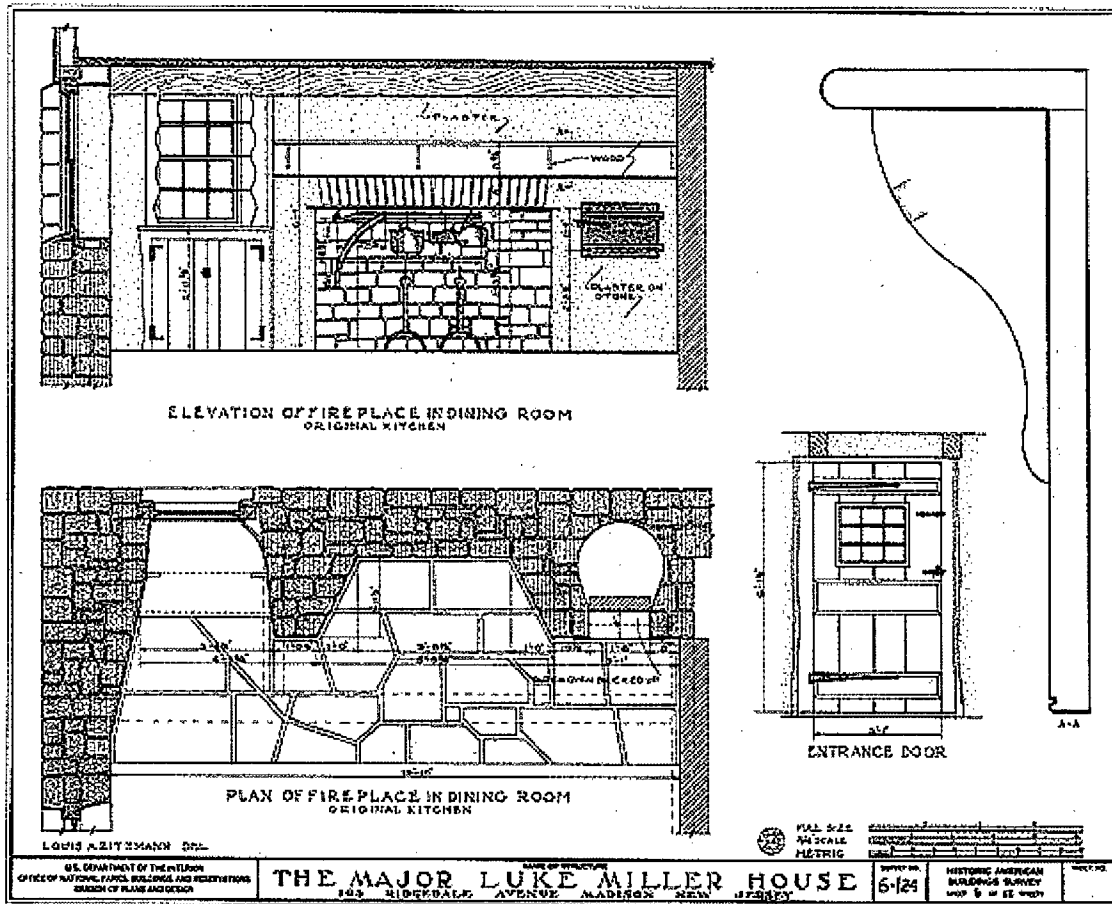
Larger reference image (TIFF - 128K bytes)
Highest resolution image (TIFF - 454K bytes)



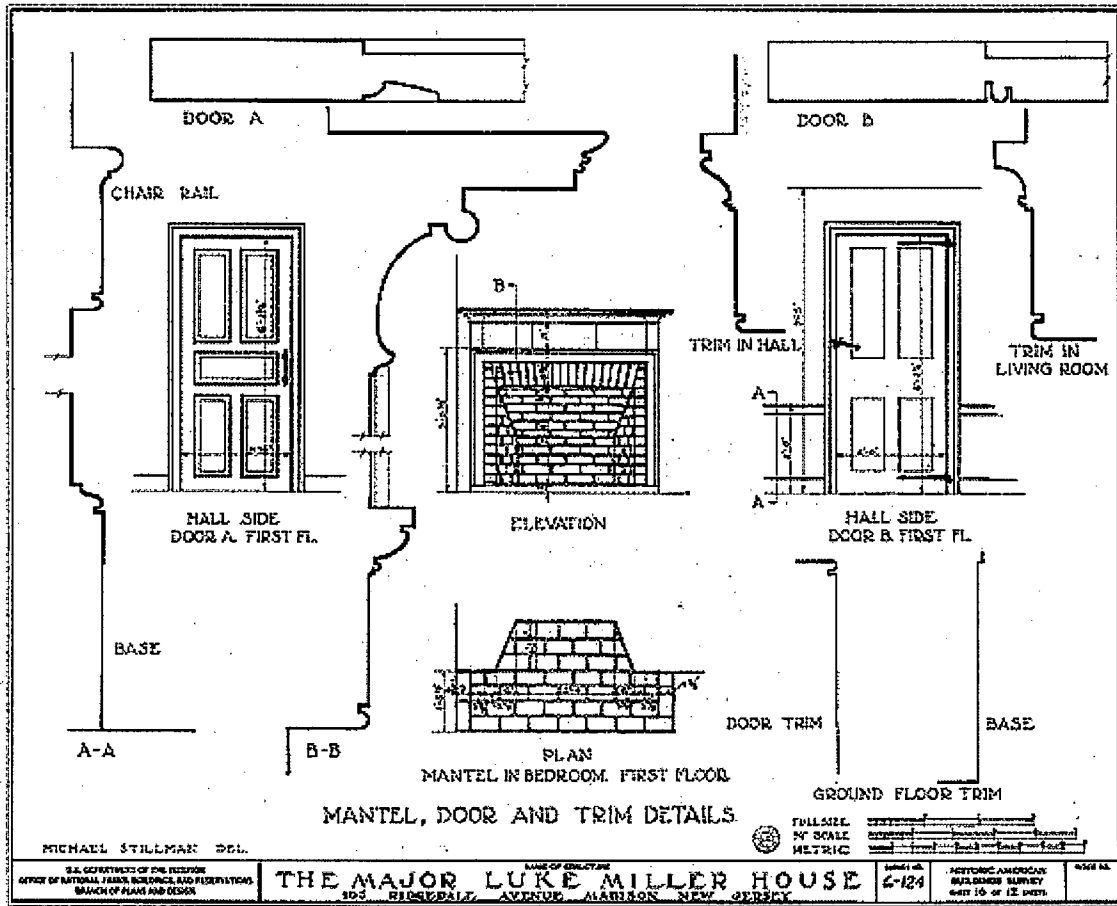
Larger reference image (TIFF - 103K bytes)
Highest resolution image (TIFF - 375K bytes)



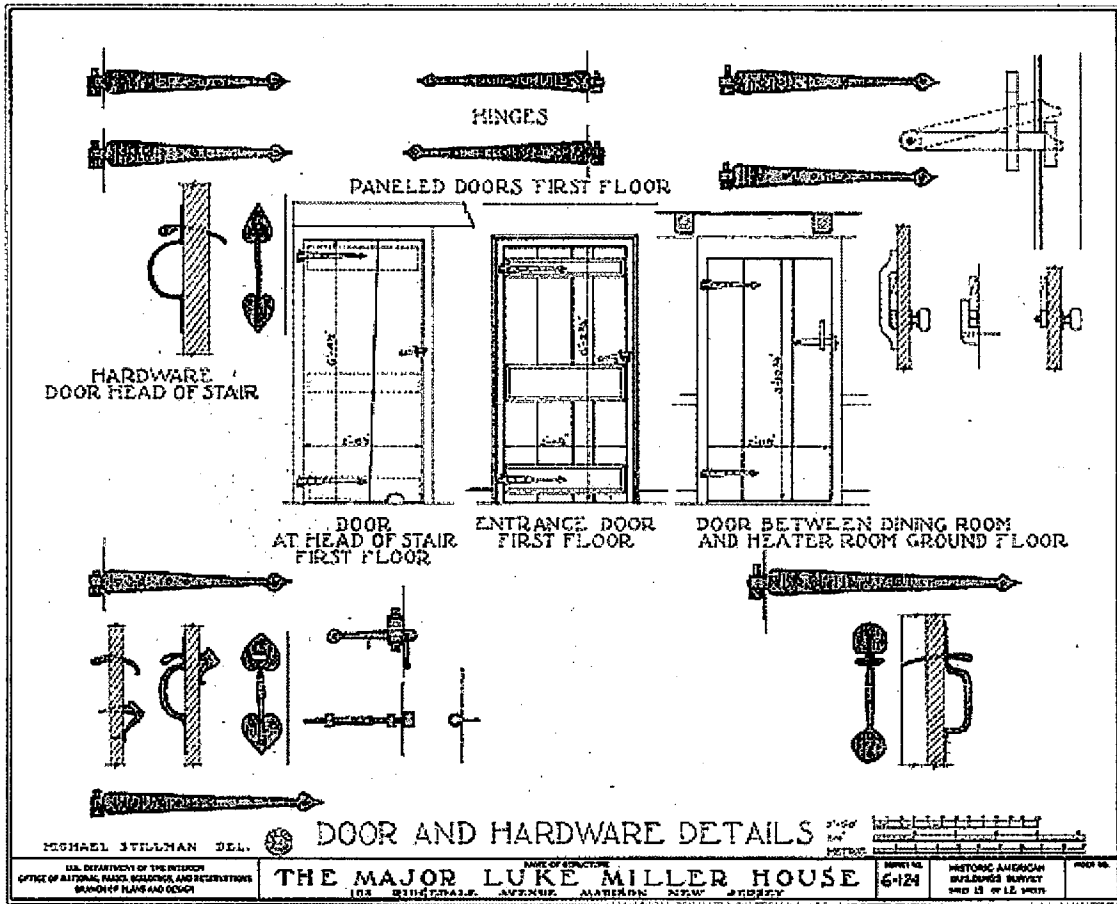
Larger reference image (TIFF - 113K bytes)
Highest resolution image (TIFF - 429K bytes)



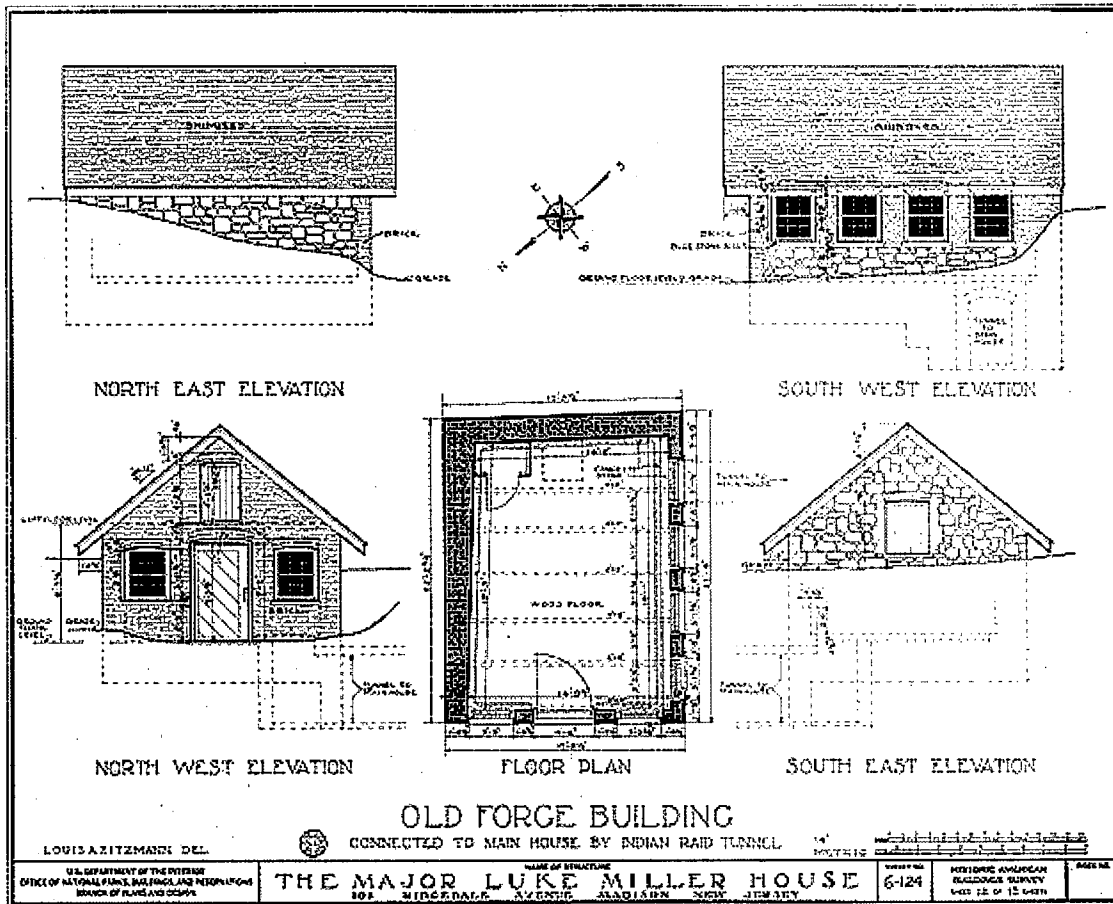
Larger reference image (TIFF - 242K bytes)
Highest resolution image (TIFF - 825K bytes)



Larger reference image (TIFF - 151K bytes)
Highest resolution image (TIFF - 562K bytes)

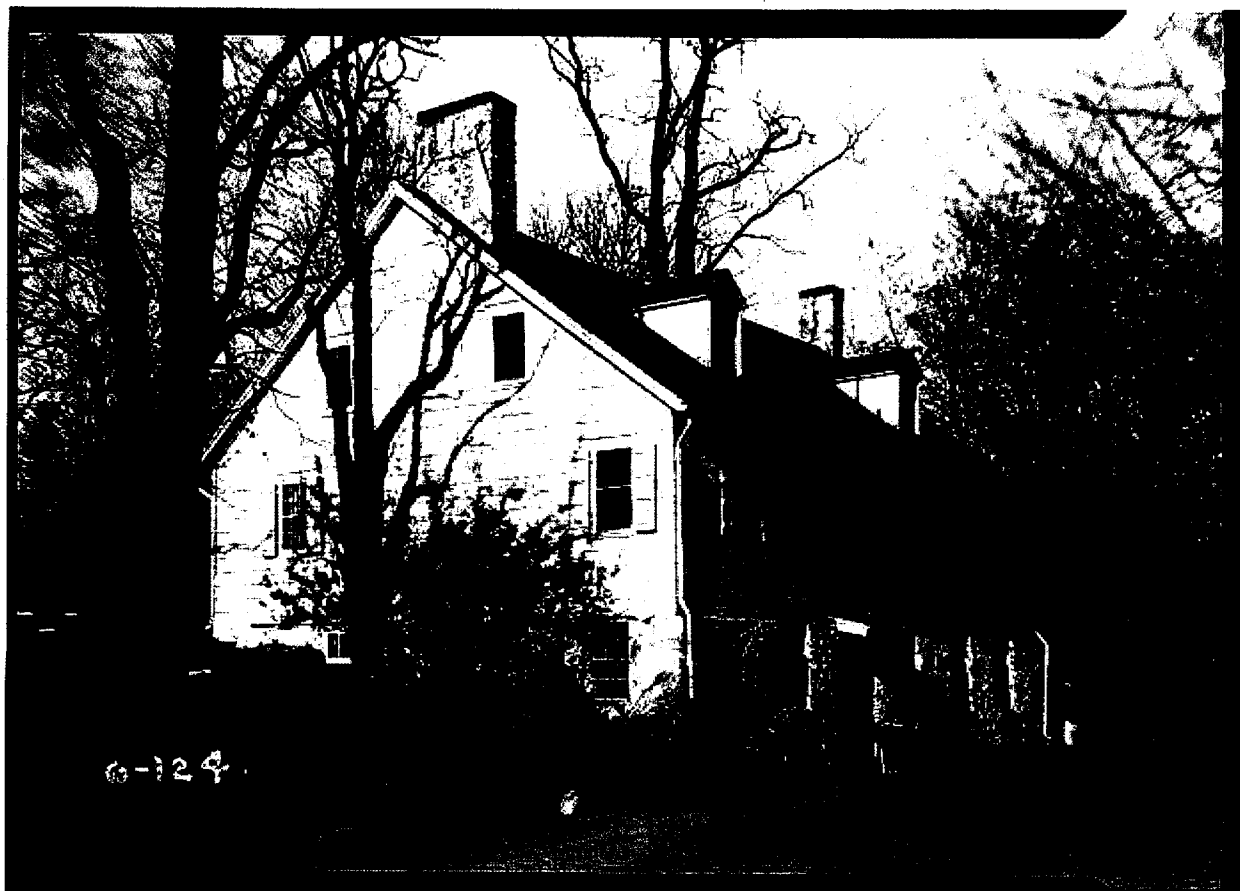


Larger reference image (TIFF - 167K bytes)
Highest resolution image (TIFF - 558K bytes)



Larger reference image (TIFF - 179K bytes)
Highest resolution image (TIFF - 581K bytes)

2. Historic American Buildings Survey R. Merritt Lacey, Photographer April 20, 1936
EXTERIOR - SOUTHWEST ELEVATION
HABS NJ,14-MAD,2-2



Larger reference image (JPEG - 160K bytes)
Highest resolution image (TIFF - 17526K bytes)

Major Luke Miller House
105 Ridgedale Avenue
Madison, Morris County, New Jersey

HAES-NJ-124

HAES
NJ
M-MAD
2-

PHOTOGRAPHS
WRITTEN HISTORICAL AND DESCRIPTIVE DATA
District of New Jersey

Historic American Buildings Survey
Seymour Williams, A.I.A., District Officer
133 Central Avenue, Rahway, New Jersey

[Bibliographic information](#) | [Start Over in the Catalog](#) | [Highest Resolution Image \(Compressed TIFF - 42K\)](#)

Data page 1 of 4

Turn to data page

1

[NEXT DATA PAGE](#)

HABS-NJ-184

Page 1

HAES
N.J.

14. MAR

2.

Major Luke Miller House
106 Ridgedale Avenue
Madison, Morris County, New Jersey

Owner: Mr. and Mrs. Matthew Jones

Date of Erection: 1730 (on chimney of west elevation)

Architect:

Builder: Andrew Miller

Present Condition: Good

Number of Stories: One and one-half

Materials of Construction: Foundation - stone

Exterior walls - frame
construction, shingles

Interior walls - plaster

Inside brick chimneys

Roof - pitch with dormers
recently added, wood
shingles

Old Forge Building: Stone
foundation except northwest
elevation; pitch roof with
shingles; connected with
the house by a secret tunnel

Historical Data:

This house was erected prior to 1755 by
Andrew Miller on a portion of the tract purchased

DATA NOT REPRODUCIBLE AND NOT GUARANTEED
BY BUREAU OF CONSERVATION

[Bibliographic information](#) | [Start Over in the Catalog](#) | [Highest Resolution Image \(Compressed TIFF - 19K\)](#)

Data page 2 of 4

Turn to data page

[PREV DATA PAGE](#) | [NEXT DATA PAGE](#)

2

HABS-NJ-124

Page 2

N. J.

14 - MAD

2.

from David Sunnet who was the original purchaser from the Indians.

During the Revolution Josiah Miller, son of Andrew Miller, occupied the house. At this time Major Luke Miller, from whom the house gets its name, was seventeen years old. The Major lived there until his death at ninety-one. The house remained in the possession of the Miller family until about 1880, when it passed into the hands of Mr. Lewis Sayre.

The interesting feature of the property is an Indian raid tunnel extending from a small sub-cellar in the house to the old forge located about sixty feet to the north.

When the Revolutionary Army was encamped at Loantaka Valley, the Miller House was the scene of much hospitality. Both officers and men received welcome there and many distinguished men frequented the house. There was a Washington's chair in the house which undoubtedly was genuine, for he was there many times.

The house is on a side of a hill and has an entrance to the old basement kitchen on the south side. The ground floor at present contains the dining room and kitchen. The entrance to the living room is on the north side. The interior of the house itself is plain and simple.

DATA NOT FORN RELEASED
BY ORDER OF THE SECRETARY OF THE ARMY

[Bibliographic information](#) | [Start Over in the Catalog](#) | [Highest Resolution Image \(Compressed TIFF - 28K\)](#)

Data page 3 of 4

Turn to data page

[PREV DATA PAGE](#) | [NEXT DATA PAGE](#)

3

HABS-NJ-124

Page 3

N. J.

14. MAD

2 -

Bibliography:

Tuttle, W.P. Bottle Hill and Madison
Madison, Madison Eagle Press, 1916

Field Book and Drawings of Survey

Katherine Rust
Supervising Historian

Approved:
Stewart Williams
STEWART WILLIAMS, A.I.A.
District Officer

DATA NOT FORNISHED AND NOT GUARANTEED
BY BUREAU OF ARCHITECTURE

Rev. Dec. 1 '36 T.W.

[Bibliographic information](#) | [Start Over in the Catalog](#) | [Highest Resolution Image \(Compressed TIFF - 12K\)](#)

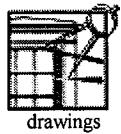
Data page 4 of 4

Turn to data page

[PREV DATA PAGE](#)

4

Historic American Buildings Survey/Historic American Engineering Record



Supplemental
Material

Andrew Miller House, 105 Ridgedale Avenue, Madison, Morris County, NJ

Images 1 through 2 of 2

For a larger reference image, click on the picture or text.

Bibliographic information | Start Over in the Catalog

STATE New Jersey	COUNTY Morris	TOWN OR VICINITY Madison	12 4p 3d
INDEX NUMBER NJ 14-MAD-2	MONUMENT ANDREW 105 RIDGEDALE AVE. Major Luke Miller House		
REPRESENTED IN NEGATIVE FILE	H.A.B.S. SURVEY NO. 64-124	History - Built 1730 (on chimney of west elevation)	
PUBLISHED PHOTOGRAPHS	by Andrew Miller; Present Owner, Mr. and Mrs. Matthew Jones		
PUBLISHED DRAWINGS	Description - frame construction, shingles; inside brick chimneys; roof - pitch with dormers recently added, wood shingles; one and one-half stories. Old Forge Building - stone except northwest elevation; pitch roof with shingles;		
F.N. - 86	HISTORIC AMERICAN BUILDINGS SURVEY		

References - Tuttle, W.P. Bottle Hill and Madison Madison, Madison Eagle Press, 1916

Field Book and Drawings of Survey

**Walter E. Rutt
Supervising Historian
July 13, 1936**

**744 Broad Street
Newark, New Jersey**

Bibliographic information | Start Over in the Catalog

Images 1 through 2 of 2